

Models 12AS/1 & 12ASL/1 Heat Seal Testers, Factory Refurbished w/ Quick-Change Sealing Bar Dies

Full-Featured Laboratory Heat Sealers for Film and Sheet

Oakland Instrument offers the Model 12AS/1 and 12ASL/1, simple to use stand-alone, instrumented testers, for measuring heat sealing properties of film, sheet, and laminated materials.

Improved Film and Sheet Quality, Increased Profit Margins

The Model 12AS/1 and 12ASL/1 Heat Seal Tester are proven tools for more closely controlling nominal heat sealing characteristics to speed your:

- Production and additives settings and adjustments
- Research and development of new film and sheet products
- Inspection of incoming film and sheet products
- In-process checks to ensure on-spec product for converting operations

The Oakland Advantage

Meets ASTM

Meets specifications of ASTM F-88 Standard Test Method for Seal Strength of Flexible Barrier Materials.

Advanced Technical Features in Each Model

Flexible Operation for Heat Seal Testing

The 12AS/1 is a constant-heat style bar sealer with fully adjustable digital heating timer, digitally-adjustable seal-bar pressure and adjustable, individual, temperature for the upper sealing bar. The 12ASL/1 is a constant-heat style bar sealer with fully adjustable digital controls, with upper and lower temperature-controlled sealing bars.

Interchangeable Sealing Bar Dies / Jaws

Oakland's quick-change Sealing Bar Jaws allow heat seals in a wide range of widths including cold seal options.

Additional Features

Adjustable temperature fault / reset control, adjustable pressure fault / reset control plus seal time short cycle alarm / reset interlock.

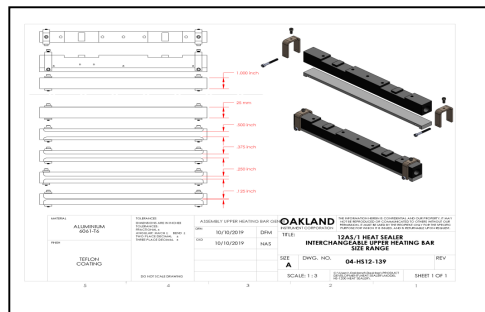
6-Button selectable thermocouple output (4 outputs for upper heating bar), switch closure output for seal time, plus air connection output for remote monitoring or calibration of air pressure.

Warranty Included

Factory Refurbished by Oakland Instrument with a 3-Year Parts & Labor Warranty.



The Model 12ASL/1 Heat Seal Tester, with Quick-Change Sealing Bar Dies



Quick-Change Sealing Bar Dies available in wide range of sizes

Oakland Instrument Corp.

Oakland Instrument Corp. specializes in the design, manufacture and distribution of test, and measurement systems for the plastics, packaging, paper and tissue industries.

Customer-Driven

We team with our customers to help them solve their quality- and process-control problems.

Technology-Based

Our applications knowledge and engineering depth allow us to offer both standard and custom systems based on industry-leading technology.

Specifications

Model No:	Model 12AS/1	Model 12ASL/1
Type:	Upper Constant Heat Sealing Bar	Upper & Lower Constant Heat Sealing Bars
Interchangeable Dies:	Upper Interchangeable Dies	Upper & Lower Interchangeable Dies
Number of Zones:	Single-Zone Design	Single-Zone Design
Standard Seal Area:	12 in. x 1 in. (25 mm)	12 in. x 1 in. (25 mm)
Sealing Bars:	Upper Heating Bar w/ Temperature Controller	Upper & Lower Heating Bars w/ Independent Digital Temperature Controllers
Upper (& Lower) Seal Bar Seal Area Options:	12 in. x 0.500 in., 12 in. x 0.375 in., 12 in. x 0.250 in., 12 in. x 0.125 in., Teflon Coated	12 in. x 0.500 in., 12 in. x 0.375 in., 12 in. x 0.250 in., 12 in. x 0.125 in., Teflon Coated
Sealing Temperature Range:	70 Degree F (Ambient) to 482 Degree F (250 Degree C)	70 Degree F (Ambient) to 482 Degree F (250 Degree C)
Countdown Timer:	Digital Timer	Digital Timer
Temperature Control:	Surface Mounted Thermocouples Digital Temperature Controller	Surface Mounted Thermocouples Digital Temperature Controllers
Pressure Control:	Digital Pressure Controller	Digital Pressure Controller
Actuation:	Dual Action Cylinder, Pneumatic, Upper Sealing Bar	Dual Action Cylinder, Pneumatic, Upper Sealing Bar
Test Activation:	Electronic Timer Activation plus Footswitch Activation Footswitch Included	Electronic Timer Activation plus Footswitch Activation Footswitch Included
Remote Monitoring Outputs:		
Temperature:	(6) Button-selectable outputs	(6) Button-selectable outputs
Seal Time:	(1) Switch closure output	(1) Switch closure output
Pressure:	(1) Air connection for remote monitoring	(1) Air connection for remote monitoring
Power Requirements:	110 Volts, 60 Hz, 230 V, Consult factory for options	110 Volts, 60 Hz, 230 V, 50 Hz, Consult factory for options
Full Load Current:	8 Amp	8 Amp
Interrupting Capacity:	10 Amp	10 Amp
Dimensions:	15.5 inch W x 19.5 inch D x 22.5 inch H	
Weight:	90 lbs.	

(Due to continuous product improvement, all specifications are subject to change without notice.)

Ordering Information

BRO12ASL/1REFURB-1019
Oakland Instrument Corp.
7405 Bush Lake Road
Minneapolis, Minnesota 55439 USA
Tel & Fax (952) 835-4935
Email: sales@oaklandinstrument.com